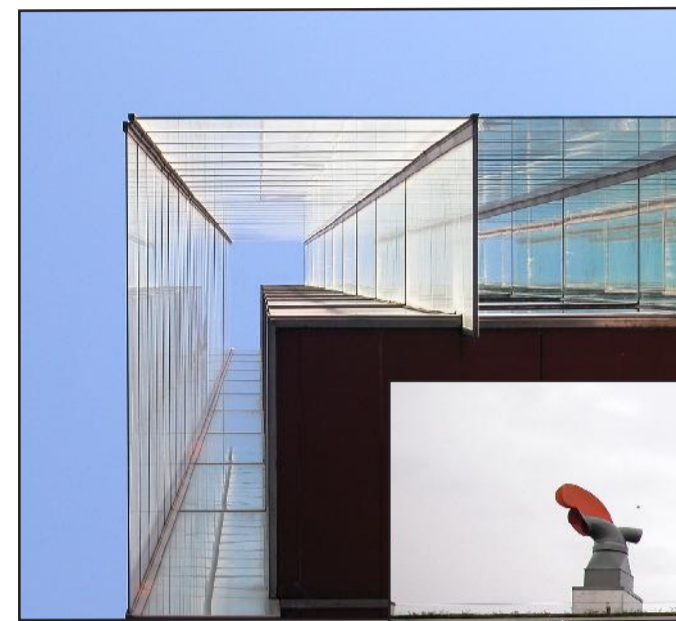


Sustainable Building Challenge



More than just pretty buildings...



The objective of SB Challenge is to provide a display of information on the performance of buildings, including performance assessment results and key performance indicators.

The SB Challenge Process

The objective of SB Challenge is to provide a display of information on the performance of buildings, including performance assessment results and key performance indicators.

SB Challenge is an international project that has included more than 20 countries over the last ten years.

Results are shown at a series of tri-annual international conferences, which to date have included very successful events in Vancouver (GBC '98), Maastricht (SB 2000), Oslo SB02 and the Tokyo SB05 conference. The SB08 Conference in Melbourne is the latest venue for SB Challenge teams and projects.

The 50+ projects being shown and discussed at SB08 come from 14 countries and include the results of eight different rating systems.

Why is there so much interest in this area? The main reason appears to be that researchers and government agencies are viewing performance rating and labelling systems as one of the best methods of moving the performance benchmarks in the marketplace towards a higher level of performance. There is a growing reali-

zation that a major jump in performance levels, at least in market economies, will depend on changes in market demand, and that such change cannot occur until building investors and tenants have access to relatively objective and simple methods that allow them to identify buildings that perform to a higher standard.

The advantages of having a global standard for building performance assessment and labelling cannot be over-emphasized. If meaningful information about performance is to be exchanged between countries, then a uniform definition of performance parameters must be developed, even if the calculation tools providing data on, for example, energy consumption and emissions, vary between countries. Further, the rapid growth of global corporations, and their desire to work to a common standard, give this work a significant commercial importance in the medium term.

The *International Initiative for a Sustainable Built Environment (iiSBE)*, is responsible for the international management and development of SBC. For this cycle, the work was coordinated by Dr. Günter Löhnert of Germany.



The SB Challenge Projects for 2008

Canadian SB08 Team	Canada	Manitoba Hydro Downtown Office Project	Japan SB08 Team	Japan	Toyota Institute Global Learning Center
Canadian SB08 Team	Canada	Gulf Islands Operations Centre	Japan SB08 Team	Japan	I-Garden Air
Canadian SB08 Team	Canada	Minto Roehampton	Dr. Murakami and Prof. Ikaga	Japan	Yusuhara Town Hall
Tongji University	China	Wenyuan Building Renovation Project	Korea National Team	Korea	Samsung Life Secho Tower
EPAD	France	The Moulins de Pantin	Korea National Team	Korea	Well Country Apartment Building (Block 1 & 2)
COGEDIM	France	The CB31 Tower	Korea National Team	Korea	Nuritkum Square
IFAE	France	Espace La Treille - CMA	Aleks Panek	Poland	Grzybowska office
GMS - Biberach	Germany	Gebhard-Mueller-School	Aleks Panek	Poland	Supermall
GAP Architects / teamgmi	Germany	Paul-Wunderlich-Haus	iiSBE Spain	Spain	Social Housing in Bermeo
Osika Ltd. Project Development	Germany	Inner City Conversion Quartier Normand Speyer"	iiSBE Spain	Spain	Social Elderly Housing in Palma
Hong Kong Housing Department	HK, China	Redevelopment of Yau Tong Estate Phase 4, Hong Kong	iiSBE Spain	Spain	Sunrise Building
Swire Properties Limited	HK, China	One Island East, Hong Kong	iiSBE Spain	Spain	C.R.A. Environment Resources Center
iiSBE Italia	Italy	I Guzzini H.Q.	Alia Afrisol Consortium	Spain	Arfrisol Barredo
iiSBE Italia	Italy	Regione Piemonte Offices	Alia Afrisol Consortium	Spain	Arfrisol
iiSBE Italia	Italy	Intesa - San Paolo Headquarters	Team Sweden	Sweden	Novartis
iiSBE Italia	Italy	Preganzio	Team Sweden	Sweden	Hamnhuset
iiSBE Italia	Italy	Coop Supermarket	ETH Zurich and Bob Gysin + Partner (B&P)	Switzerland	Eawag Forum Chriesbach
Japan SB08 Team	Japan	Kajima Akasaka Annex	Adobe and Cushman & Wakefield Sustainability	USA	Green Building Retrofit of Adobe Systems Headquarters Buildings
Japan SB08 Team	Japan	Poole Gakuin Junior and High School	Magnusson Architecture and Planning PLC	USA	Melrose Common (South Bronx, New York)
Japan SB08 Team	Japan	MOA Arthall Hokkaido	Arup	USA	Kirsch Center for Environmental Studies
Japan SB08 Team	Japan	Amami Hospital	Davis Langdon	USA	Ohlone College Newark Center for Health Sciences and Technologies
Japan SB08 Team	Japan	Aoyama Gakuin Sagamihara Campus	Davis Langdon and Cooper Union	USA	Cooper Union New Academic Building
Japan SB08 Team	Japan	Epson Innovation Center	Phipps Conservatory and Botanical Gardens	USA	Tropical Forest Conservatory
Japan SB08 Team	Japan	Nikken Sekkei Head Office	SmithGroup	USA	NREL S & T Facility
Japan SB08 Team	Japan	Shinanodai Elementary School	US SB08 Team	USA	EPA Headquarters
Japan SB08 Team	Japan	Toyota Motor Corporation HQ	Davis Langdon	UK	Project Zebra @ Lion House

